

SITES OF INTEREST 2010

Radcrete Pacific presents: **Commercial Buildings**

[Click here
for our website](#)



SITE DETAILS:	
COUNTRY	- Cyprus
SITE	- Interorient Shipping Building
CONSULTANT	- George Stamatou Architects
CONTRACTOR	- Atlas Pantou
APPLICATOR	- K. CH. Peratikos Ltd
TREATED AREA	- Balconies & water features
SIZE	- 8,000 sq metres

FIGURE 1-2.
Construction on the Interorient Shipping building and Radcon #7 treated areas.

RADCON #7 protects the new headquarters of Interorient Shipping in Cyprus.

The new Interorient Shipping headquarters in Cyprus posed a waterproofing challenge with its 2 metre wide balconies stretching around the entire perimeter of the building.

RADCON Formula #7's *ease of application* (being a spray-applied subsurface membrane) made this project a breeze for the Cyprus-based approved applicators - K. CH. Peratikos Ltd.

RADCON #7 does not suffer from mechanical or UV damage and therefore significantly increases the lifespan of the structure.



SITES OF INTEREST 2010

Radcrete Pacific presents: **Commercial Buildings**

[Click here for our website](#)



SITE DETAILS:

COUNTRY	- Italy
SITE	- Our Lady Sanctuary
CLIENT	- Syracuse Municipality
CONTRACTOR	- FIP Industrial S.p.A.
ARCHITECT	- Salvatore Calafiore
APPLICATOR	- Celegato Company
TREATED AREA	- Facade
SIZE	- 33,000 sq metres

FIGURE 1-2.

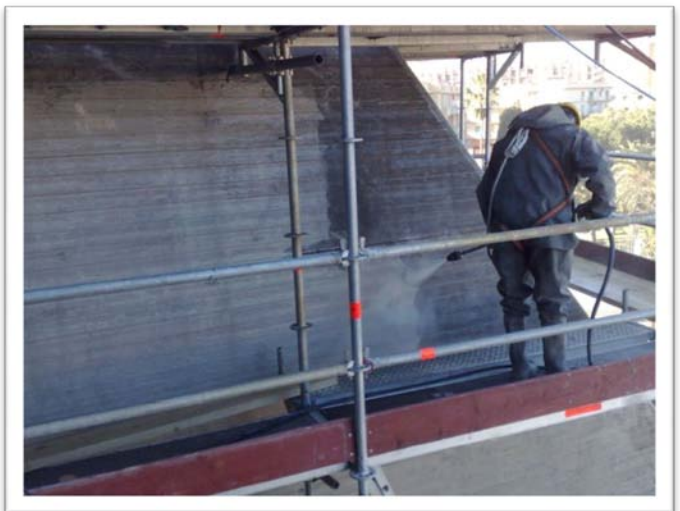
Our Lady Sanctuary and Radcon #7 spray application on the facade of the building .

Lifetime RADCON #7 facelift for a landmark façade in Sicily.

RADCON Formula #7 has been called to the rescue of a facade with concrete that is more than 50 years old at the Our Lady Sanctuary in Syracuse, Italy.

All the concrete surfaces first had to be water blasted and treated with acetic acid.

The facade was then treated with RADCON # 7, followed by a polyurethane resin coating and took one year to complete.



SITES OF INTEREST 2010

Radcrete Pacific presents: **Commercial Buildings**

[Click here for our website](#)



SITE DETAILS:

COUNTRY	- Lebanon
SITE	- Medco
APPLICATOR	- AM3
TREATED AREA	- Rooftop

FIGURE 1-2.
Radcon #7 treated rooftop and a close-up of the cracked surface.

RADCON #7 saves a "lost cause" rooftop in Lebanon.

The pictured rooftop has had more waterproofing treatment applied to it than you can poke a stick at.

The client tried several methods to seal this severely cracked surface to no avail. Luckily, RADCON #7's applicator in Lebanon had the perfect solution.

RADCON #7 was spray-applied to the area and successfully sealed the surface within three days of application.

RADCON Formula #7 seals cracks up to 2.00mm on application and continues to re-seal any future hairline cracks.



SITES OF INTEREST 2010

Radcrete Pacific presents: **Commercial Buildings**

[Click here for our website](#)



SITE DETAILS:

COUNTRY	- Qatar
SITE	- Dukhan Housing Project
CLIENT	- Qatar Petroleum
CONTRACTOR	- Al Jaber
CONSULTANT	- Consulting Engineering Group (CEG)
TREATED AREA	- Roof tops
SIZE	- 12,000 sq metres

FIGURE 1-2.

View of the Dukhan Housing Project developed for Qatar Petroleum and the detail of the project signboard.

Qatar Petroleum protects its new housing estate with RADCON #7.

As a part of an ongoing regional development, Qatar Petroleum's new housing estate in Dukhan is nearing completion.

The project consists of 126 buildings for their employees including some 920 residential units.

RADCON #7 lifetime waterproofing was chosen for the protection of 12,000 sq metres of roof top areas in this arid climate.

RADCON #7 penetrates inside the concrete, forming a *gel-like membrane* with *no need for protective screeds* and *no future maintenance* will be required.



SITES OF INTEREST 2010

Radcrete Pacific presents: **Water Holding Vessels**

[Click here
for our website](#)



SITE DETAILS:

COUNTRY	- Australia
SITE	- Red Cross Building
CONSTRUCTION	- Buildcorp
APPLICATOR	- Uniseal
TREATED AREA	- Tank Bases & Sewerage
VOLUME	- 400 cubic metres

FIGURE 1

Visualization of the Red Cross Blood Service, Sydney.

RADMYX waterproofs the new Australian Red Cross facility.

The Australian Red Cross Blood Service was designed to become the primary blood manufacturing facility in Sydney.

Uniseal used RADMYX admixture for the tank bases and sewerage of this \$115 million dollar project being developed by Buildcorp.

RADMYX is a reliable waterproofing solution for structures subjected to hydrostatic pressure as well as *preventing contamination* and *increasing durability*.

SITES OF INTEREST 2010

Radcrete Pacific presents: **Commercial Buildings**

[Click here for our website](#)



SITE DETAILS:

COUNTRY	- Australia
SITE	- Prouds Warehouse
CONSTRUCTION	- Kell & Rigby
APPLICATOR	- Uniseal
TREATED AREA	- Suspended slabs, balconies
VOLUME	- 1,500 cubic metres

FIGURE 1

RADMYX application at Prouds Warehouse, Sydney.

"Belt and braces" approach for the new Prouds Warehouse.

Prouds is the largest jewellery chain in Australia operating some 160 stores throughout the country. A new warehouse is currently under construction at their head office location in Summer Hill, Sydney.

Uniseal were commissioned to treat the suspended slabs and balconies of the structure and due to some areas being partially exposed decided to combine RADCON #7 and RADMYX technologies for achieving a life-time waterproofing result.

RADMYX admixture used on this project is suitable for below grade areas providing a cost effective and reliable waterproofing solution.

SITES OF INTEREST 2010

Radcrete Pacific presents: **Commercial Buildings**

[Click here for our website](#)



SITE DETAILS:

COUNTRY	- Australia
SITE	- Pacific Square
CONSTRUCTION	- Abigroup
APPLICATOR	- Uniseal
TREATED AREA	- Lift pits
VOLUME	- 400 cubic metres

FIGURE 1

RADMYX site – Pacific Square at Maroubra Junction, Sydney.

Waterproofing below water table level solved by RADMYX.

Pacific Square is a new vibrant centre in Maroubra Junction, one of Sydney's Eastern coastal suburbs. The complex comprises a variety of retail outlets, leisure and fitness facilities, modern residential area, conveniently linked to major transport routes.

Groundwater pressure created a waterproofing challenge for the construction company Abigroup, who turned to Radcrete's Sydney based representative Uniseal, who applied RADMYX to all lift pits.

RADMYX is an environmentally friendly capillary waterproofing product, suitable also for potable water use and has zero VOC reading.



FIGURE 2

RADMYX application as an admixture in concrete.

SITES OF INTEREST 2010

Radcrete Pacific presents: **Commercial Buildings**

[Click here for our website](#)



SITE DETAILS:

COUNTRY	- Romania
SITE	- 17 C.A. Rosetti Business Centre
CONTRACTOR	- MEO Construct International
CONSULTANT	- Urban Office
APPLICATOR	- UNICO PROFIT SRL
TREATED AREA	- Basement

FIGURE 1-2.

View of the Rosetti Centre and the drainage system used during the basement pour.

RADMYX admixture for basement pour flooded by underground water.

Rosetti Business Centre is a modern serviced office space situated in the sought after 2nd District in Bucharest.

RADMYX Capillary Waterproofing System is a popular crystal growth solution in Romania and was utilised for the two underground levels of the structure.

RADMYX was added to the concrete mix design prior to the pour, during which 10 pumps had to be deployed to maintain underground water levels below the construction.



SITES OF INTEREST 2010

Radcrete Pacific presents: **Commercial Buildings**

[Click here for our website](#)



SITE DETAILS:

COUNTRY	- Australia
SITE	- Market Town East
CONSTRUCTION	- ADCO Construction
APPLICATOR	- Uniseal
TREATED AREA	- Basement and internal slabs
VOLUME	- 11,000 cubic metres

FIGURE 1-2.

Pouring of concrete with RADMYX admixture at the Market Town East Shopping Centre.

RADMYX application underway for a new shopping centre development.

Market Town East is a new shopping centre development currently under construction in Newcastle, NSW - a long awaited addition to the local infrastructure that will facilitate all surrounding residential areas.

RADMYX Capillary Waterproofing System was chosen by the contractor, ADCO Construction, for waterproofing of the basement and all internal slabs of the structure.

Approved Applicator, Uniseal Pty. Ltd, has over 20 years experience with this versatile and cost effective crystal growth product, which was used as admixture for this project.



SITES OF INTEREST 2010

Radcrete Pacific presents: **Commercial Buildings**

[Click here for our website](#)



SITE DETAILS:

COUNTRY	- Australia
SITE	- Belmont Plaza
ARCHITECT	- Leffler Simes
BUILDER	- ADCO Construction
APPLICATOR	- Uniseal
TREATED AREA	- Bowling Greens, Car park, Plant rooms
VOLUME	- 5,000 cubic metres

FIGURE 1-2.

RADMYX concrete pour at the Belmont Plaza, Lake Macquarie.

RADMYX protection for ADCO's Belmont Plaza Centre.

Belmont Plaza is a new shopping centre development at Lake Macquarie, NSW, housing more than 30 speciality shops and a new sporting facility for the Belmont Bowling Club.

ADCO, Australia-wide building company, chose *RADMYX capillary waterproofing system* for the bowling greens, underground car park and plant room areas with a combined volume of 5,000 cubic metres.

RADMYX can be added to the concrete mix prior to the pour, providing a reliable waterproofing solution that remains dormant inside the slab and reactivates upon contact with water.



SITES OF INTEREST 2010

Radcrete Pacific presents: **Sea Walls**

[Click here
for our website](#)



SITE DETAILS:

COUNTRY	- UAE
SITE	- Sowwah Sea Wall
CONTRACTOR	- Al Naboodah
CONSULTANT	- Gifford Global
TREATED AREA	- Sea wall
SIZE	- 7,500 sq metres

FIGURE 1-2.

RADCON #7 treated sea wall and visualisation of the Sowwah Island

RADCON #7 seals off the new Abu Dhabi CBD on Sowwah Island.

Sowwah Island, a 105 hectare development situated between Abu Dhabi Island, Al Reem Island and Mina Zayed, is quickly taking shape to become the country's new Central Business and Financial District.

This massive project, designed to accommodate a 75,000 strong workforce and house 30,000 residents, is currently well in to construction of Phase 1.

It includes the prime part of the island, namely the completion of 4 out of 13 bridges, utilities, a two-tier road network, pedestrian passageways and an extensive sea wall.

RADCON Formula #7 lifetime waterproofing and protection technology was used on this 4.5 km long sea wall surrounding the island.

RADCON is ideal for marine environments as its key benefits include *89% chloride ions ingress reduction* and *70% water permeability reduction*.



SITES OF INTEREST 2010

Radcrete Pacific presents: **Trafficable Areas**

[Click here for our website](#)



SITE DETAILS:	
COUNTRY	- Romania
SITE	- Baneasa Underpass
DESIGNER	- SEARCH Corp. Bucuresti
CONSULTANT	- Septembrie Consulting SRL
CLIENT	- National Hwys & Rds Co.
TREATED AREA	- Bridge deck
SIZE	- 2,500 sq metres

FIGURE 1.

Live cam shot of the Baneasa Underpass in Bucharest.



RADCON #7 now for Romanian bridges.

As part of the government's effort to streamline traffic on the main airport route in Bucharest, a new six lane Baneasa underpass was introduced.

Given the location near the centre of the city, the client was looking for a reliable waterproofing solution with short application time.

RADCON Formula #7 performs exceptionally well on structures exposed to severe weather conditions reducing freeze/thaw degradation by 89%. The product's re-sealing characteristic ensures no future maintenance is required after application despite being subjected to continuous weight load.

Also, RADCON #7 is quick and easy to apply, being sprayed directly on the concrete surface, which allows for project fast tracking.

SITES OF INTEREST 2010

Radcrete Pacific presents: **Trafficable Areas**

[Click here for our website](#)



SITE DETAILS:	
COUNTRY	- Vietnam
SITE	- Calmette Bridge
CONTRACTOR	- OBAYASHI/MITSUBISHI JV
CONSULTANT	- Pacific Consultants International
APPLICATOR	- Indochina Centrepro
TREATED AREA	- Bridge deck
SIZE	- 10,549 sq metres

FIGURE 1.

Radcon #7 treated bridge deck of the East West Freeway of the Calmette bridge.

OBAYASHI and MITSUBISHI utilise RADCON #7 for East West freeway in Vietnam.

Radcon #7 has been the preferred bridge deck waterproofing solution in Vietnam for some 20 years now.

The contractor, OBAYASHI, knew from previous applications that only RADCON #7 can deliver unique lifetime waterproofing performance even though it will be subjected to high thermal stress and load conditions.

The 300 metres long and 24 metres wide bridge deck will facilitate 6 traffic lanes as a relief to heavy traffic between Calmette Street in District 1 and Doan Van Bo Street in District 4. The Calmette Bridge is just one of a series of bridges in the East West freeway through the heart of Ho Chi Minh City.

Radcon #7 re-seals any future hairline cracks on contact with water and protects the concrete surface from carbonation.

SITES OF INTEREST 2010

Radcrete Pacific presents: **Trafficable Areas**

[Click here
for our website](#)



SITE DETAILS:

COUNTRY	- Bahrain
SITE	- Al Matrook Private Villa
CLIENT	- Jameel Al Matrook
PROJECT MNGT	- Meritas Management
CONSULTANT	- Davenport Campbell
TREATED AREA	- Podium deck & suspended driveway

FIGURE 1-2.

Radcon #7 protected villa and the application process on site.

Venice style resort on a man made island in Bahrain utilises **RADCON #7.**

The Amwaj Island Project is a new luxury development being raised on an artificial island in the Arabian Gulf.

It combines living, recreational, business and retail facilities on a cluster of 6 islands.

RADCON Formula #7 was used on a podium deck and suspended driveway on one of the private villas located on the Najmah island.

The product's unique *waterproofing performance* and *faultless sealing characteristics* make it the ideal solution for specialty applications such as this one.



SITES OF INTEREST 2010

Radcrete Pacific presents: **Trafficable Areas**

[Click here
for our website](#)



SITE DETAILS:

COUNTRY	- Iran
SITE	- Roshandelan Bridge
CLIENT	- Municipality of Tehran
TREATED AREA	- Bridge deck
SIZE	- 12,000 sq metres

FIGURE 1.

RADCON #7 treated bridge deck of the Roshandelan Bridge

RADCON #7 protects new bridge projects in Iran.

The Roshandelan Bridge is a much anticipated urban project in Tehran , addressing the capital's centre traffic congestion.

Facilitating both passenger vehicles and BRTs (Bus Rapid Transport), the eight lanes carry around 40,000 cars a day.

RADCON Formula #7 was applied to the bridge deck providing amongst other benefits a *significant increase of service life , with no bond loss* between the concrete and the asphalt.

RADCON #7 not only seals structural concrete but it also protects and improves its characteristics ,and therefore enhances overall performance of the structure.

SITES OF INTEREST 2010

Radcrete Pacific presents: **Trafficable Areas**

[Click here for our website](#)



SITE DETAILS:	
COUNTRY	- Brazil
SITE	- Iguatemi Shopping Salvador
CLIENT	- Iguatemi Shopping Centres
CONSULTANT	- Netherland Engenharia Ltda
APPLICATOR	- Aterel Ltd
TREATED AREA	- Rooftop car park
SIZE	- 3,850 sq metres

FIGURE 1-2.
Radcon #7 spray-application on the rooftop car park.

RADCON #7's faultless performance on a rooftop car park in Brazil.

Radcon Formula #7 treatment for the rooftop and exposed car park of the Iguatemi Shopping Centre in Salvador was concluded in January 2007.

The area was required for the centre's grand opening and therefore left the authorised applicator – Aterel Ltd, with *only 3 days to waterproof an area of 3,850 sq metres!*

As there are department stores and other parking spaces located below the treated area, it was crucial to guarantee a 100% watertight result.

Radcon Formula #7 has been *performing without any leakage* since the completion of the works and *under severe traffic and weather conditions* (heat and torrential rains).



SITES OF INTEREST 2010

Radcrete Pacific presents: **Trafficable Areas**

[Click here
for our website](#)



SITE DETAILS:

COUNTRY	- Peru
SITE	- Canadian Embassy
CLIENT	- HV Ingenieros
CONSULTANT	- GCA Ingenieros
APPLICATOR	- Sacosi S.A.C.
TREATED AREA	- Carpark
SIZE	- 3,000 sq metres

FIGURE 1-2.

View of the courtyard inside the Embassy grounds and the front view of the Embassy.

RADCON #7 protection for Canadian Embassy in Peru.

Radcon Formula #7 was applied to a second floor carpark area located inside of the recently inaugurated embassy building in Lima.

The unusual placement goes in line with the Peruvian architect's, Rafeal Morales Blondet, efforts to convey Canada's values of transparency, strength and modernity.

Radcon Formula #7 is an *innovative* and *environmentally friendly* approach to concrete waterproofing.

Forming an *amorphous membrane inside* the concrete, it is *not vulnerable to mechanical or UV damage* like traditional membranes.



SITES OF INTEREST 2010

Radcrete Pacific presents: **Trafficable Areas**

[Click here
for our website](#)



SITE DETAILS:

COUNTRY	- Iran
SITE	- Saiyad Shirazi Expressway
CONTRACTOR	- Trailer Co
CONSULTANT	- Parsilo Co
TREATED AREA	- Raised highway section

FIGURE 1-2.

RADCON #7 treated area of the Saiyad Shirazi Expressway.

RADCON #7 protection for raised expressway in Tehran.

Saiyad Shirazi raised expressway is the first structure in Iran waterproofed and protected with RADCON Formula #7 technology.

Although the technology has been around for 20+ years, it only got its debut in Iran on this particular highway project last year.

RADCON #7's superior waterproofing protection and durability increase in structures subjected to thermal stress and weight loading are just some of the benefits.



EXCLUSIVE GLOBAL DISTRIBUTOR FOR **RADCON FORMULA #7** WATERPROOFING CONCRETE FOR LIFE

SITES OF INTEREST 2010

Radcrete Pacific presents: **Trafficable Areas**

[Click here
for our website](#)



SITE DETAILS:

COUNTRY	- Iran
SITE	- Saleh Abad Expressway
CONTRACTOR	- Trailer Co
CLIENT	- Municipality of Tehran
TREATED AREA	- Raised highway section

FIGURE 1-2.

RADCON #7 treated surface of the raised section of Saleh Abad Expressway.

More RADCON #7 treatment for a raised expressway in Tehran.

Following the introduction of RADCON Formula #7 technology to the Iranian market, it has been winning specifications for raised highway projects protection.

The Saleh Abad overpass, an addition to the Behesh Zahra Expressway, is another example of the need for superior protection for concrete structures in Tehran.

RADCON #7 is particularly suitable for these projects as the whole area lies on an earthquake prone large tectonic fault line.

Therefore its unique ability to re-seal any future hairline cracks up to 0.3 mm is essential in the region.

RADCON #7 re-sealing performance in earthquake zones has been proven on numerous sites such as Taipei (Taiwan) General Hospital, Kloster Ford (Newcastle Australia) DFS Duty Free Saipan and various sites in Japan spanning 17 years.

EXCLUSIVE GLOBAL DISTRIBUTOR FOR **RADCON FORMULA #7** WATERPROOFING CONCRETE FOR LIFE

SITES OF INTEREST 2010

Radcrete Pacific presents: **Trafficable Areas**

[Click here
for our website](#)



SITE DETAILS:

COUNTRY	- Iran
SITE	- Yasini Expressway
CONTRACTOR	- Gharargah Khatam Co
CONSULTANT	- Saziyan Co
TREATED AREA	- Raised highway section

FIGURE 1-2.

B2 part of the Yasini Expressway to be treated with RADCON Formula #7.

Raised highway extension treated with RADCON #7.

RADCON Formula #7 protection is required for another raised overpass extension to Iran's continuous paved road system upgrade.

The Yasini Expressway raised segment called B2 is currently under construction as a part of the Tehran Municipality construction project.

Iran's roadway expansion reflects the country's foreign policy which prioritises inter-regional economic interaction in key economic sectors, including transportation.